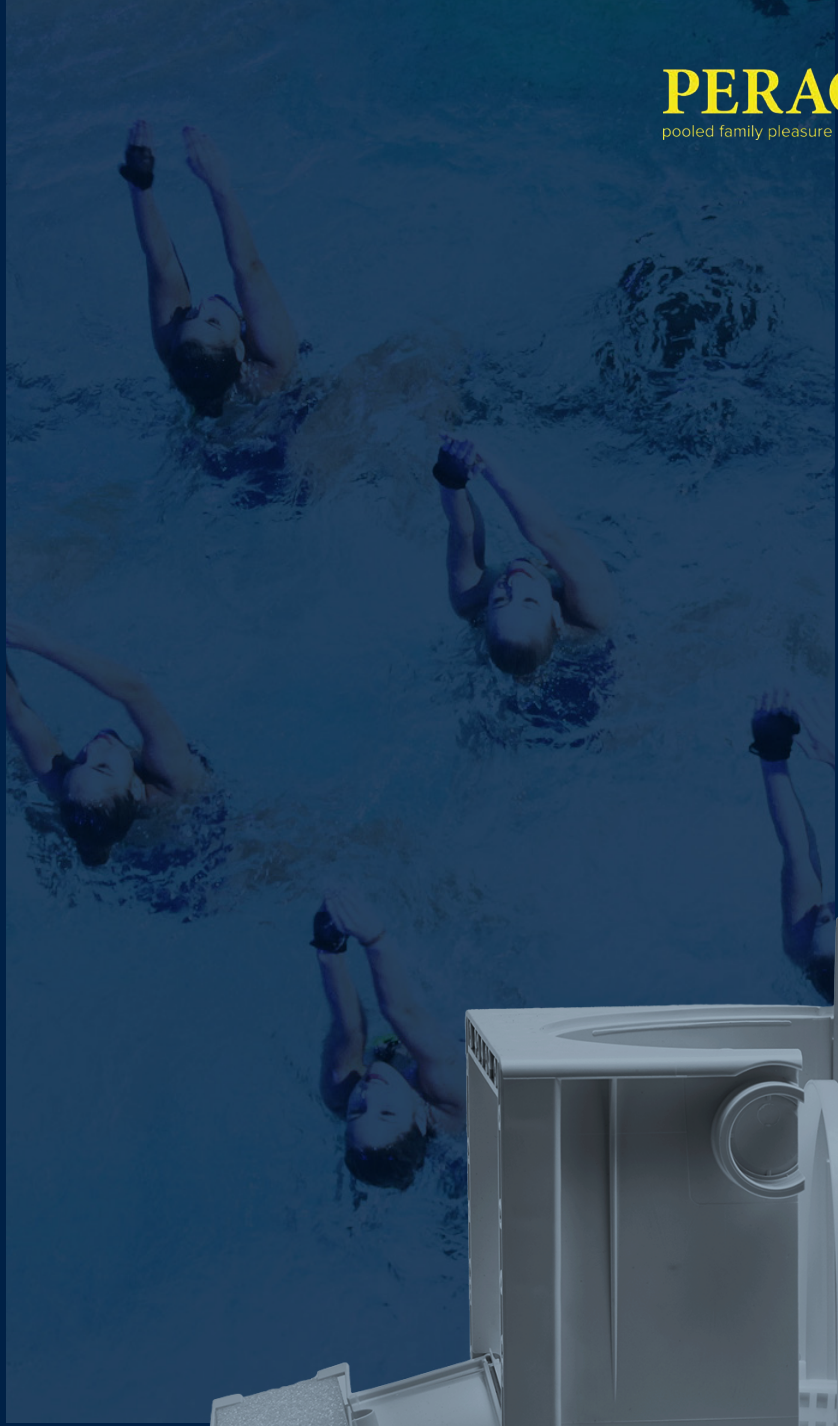


ocean smart WHITE GOODS ABS & V4A



BUILT IN
FOR
LONG-TERM



ocean

CLEVERLY COMBINED WITH THE SKIMMER DELUXE HIGH75

The very flat design of Peraqua® skimmer extensions allow an impressive low waterline and gives a nearly seamless transition from waterline to pool edge. The unique and flexible modular system enables the individual configuration of design and color of the pool.

The Ocean® Skimmer M5/PT deluxe contains a holder for a level sensor. The control unit and the protective grating are optionally available. In case of low water level the the level sensor, which is connected to a solenoid valve via a controller, fills the pool with water. This avoids a dry running of the pump.

HIGH WATER LEVEL SKIMMER

Ocean® Skimmer M5 deluxe High75, ABS + V4A

high water level up to 4 - 5 cm, square V4A flange cover & V4A extension, high polish, for liner, built-in and concrete pools, suction width 666 mm, incl. sieve basket, holder f. PVC niveau sensor, d50 solvent + 2" female connection
Available in white, grey, black



Smart Skimmer High75 ABS

High water level up to 6-7 cm, Suction width 700 mm, for liner, concrete and built-up pools, incl. sieve basket, R 1½" + 2" female thread connection

Available in white and black



Ocean® Skimmer M5 deluxe High47 ABS + V4A

Extra high water level up to 4-5 cm, square V4A-flange cover & V4A extension, high polish, Suction width 390 mm, for liner, concrete and built-up pools, incl. sieve basket, holder f. PVC niveau sensor, d50 solvent + 2" female connection



Smart Skimmer High50 white ABS

NEW

high water level skimmer ABS, for liner and built-up pools, sealing, screw set AISI-316, sieve basket, R1½"+2" female connection, recommended flow rate 5m³/h



Niveau control NC01 plug-in

with time delay switch (from 2-135 sec), incl. magnetic floater for easy installation on Ocean® skimmer M5 and PT, skimmer is equipped with an integrated and adjustable holder for the niveau floater



Ocean® water regulation system

mechanic, ABS, water connection ¾", body connection d63/d50, incl. adjustable floater



SKIMMER DELUXE & ACCESSORIES

M5 or PT

Ocean® Skimmer deluxe, M5 oder PT

for liner, built-up, concrete and tile pools

incl. basket, flange set, Skim Vac, plate d32/38, flange, M5 thread inserts A4 (SS316), screw set, sealing, reduction 2"/1½" and overflow connection d50, incl. notch for PVC niveau sensor - recommended flow rate 8 m³/h - for each 25 m² water surface on skimmer recommended



Niveau sensor in the Skimmer against surcharge

The niveau sensor is optionally included, the sensor is connected to a solenoid valve via a controller and automatically fills the pool with water.

M5: white
PT: white, black, grey

Ocean® protective grating

for Skimmer Ocean® deluxe, against leaves and all other pool contaminations, which might affect the functionality of the PVC solenoid niveau switch NC01. Retrofitting possible



Ocean® wide mouth extension deluxe

25 cm mounting depth, sealings, flange, screw set, for optimal front extension and enlargement of Ocean® skimmer deluxe M5/PT

M5: white, with M5 thread inserts A4(SS316)
PT: white, grey, black, PT self-drilling



Ocean® Skimmer extension deluxe

25 cm mounting depth, sealings, flange, screw set, for optimal front extension of Ocean® skimmer deluxe M5/PT

M5: white, with M5 thread inserts A4(SS316)
PT: white, black, PT self-drilling



Ocean® wide mouth/slanted flange (6°)

25 cm mounting depth, for mounting straight on the sloping pool flange and for front extension and enlargement of Ocean® skimmer deluxe M5/PT

M5: white, with M5 thread inserts A4(SS316)
PT: grey, black, PT self-drilling



Ocean® stainless steel extension High75

V4A, incl. flange, waterline 4,5 cm, Suction width 665,6 mm for ABS Ocean® Skimmer deluxe



Also available as type High75 6° for sloping pool flange

Ocean® stainless steel extension for High47

V4A, incl. flange, waterline 4,5 cm, Suction width 387,6 mm for ABS Ocean® Skimmer deluxe



Also available as type High47 6° for sloping pool flange

Ocean® height extension deluxe

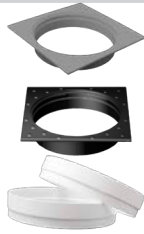
incl. 2 pcs extension rings (Teleskopsystem), square cover for round standard skimmer lids, ABS, white



collar & rings for Ocean® Skimmer deluxe

individual height extension for Ocean® Skimmer deluxe M5/PT

collar: grey, black
rings: white



Ocean® skimmer lid & height extension V4A (SS316)

AISI316/SS316, for Ocean® skimmer deluxe, square 250x250 mm, incl. round cover and height compensation 4,5 cm



Solvent sealing for Ocean® Skimmer deluxe

alternative for the included double lip sealing for Ocean® skimmer deluxe, solvent sealing



frame for Ocean® Skimmer deluxe

Dimensions: 263 x 211 mm

white, grey, black, V4A (SS316)



Wide mouth frame for Ocean® Skimmer deluxe

Dimensions: 466 x 242 mm

white, grey, black, V4A (SS316)



Smart winter plug

1½" EPDM 38 - 51 mm
or
2" EPDM 51 - 63,5 mm



ocean®

INLET NOZZLES

deluxe, M5 or PT

Ocean® wall conduit deluxe

PT type for built-up, liner & tile pools, with PT Screw set self-drilling



M5 type for built-up, liner, tile & concrete pools with integrated M5 thread inserts A4 (SS316)

2" female / male thread / solvent d50 mm, incl. 2fixing brackets, holes for reinforcing iron bars and counter nut for the wall formwork



M5 type with A4 thread inserts

Ocean® inlet nozzle deluxe M5, DIN

with ball acc. DIN EN16582, Sealing, Screw set, in combination with wall conduit deluxe M5



white, grey, black



Ocean® Inlet nozzle deluxe M5, Standard

with ball universal type 13/17/21 mm, Sealing, Screw set, in combination with wall conduit deluxe M5



grey

Ocean® Inlet nozzle deluxe PT, DIN

for liner pools, with ball acc. DIN EN16582, Sealing, PT Screw set self-drilling, in combination with wall conduit deluxe PT



white, grey



Ocean® Inlet nozzle deluxe PT, DIN

for concrete & tile pools, with ball acc. DIN EN16582, 2" male threads/d50, application for direct turn-in, in combination with wall conduit deluxe PT



white

Ocean® Inlet nozzle deluxe M5, DIN, short version

for liner & stainless steel pools, with ball acc. DIN EN16582, Screw set, 2 Sealings, M5 stainless steel thread inserts, solvent connection d50/63, set



white

Ocean® Inlet nozzle deluxe PT, DIN, short version

for liner & stainless steel pools, with ball acc. DIN EN16582, PT Screw set self-drilling, 2 Sealing, solvent connection d50/63, set



white, grey

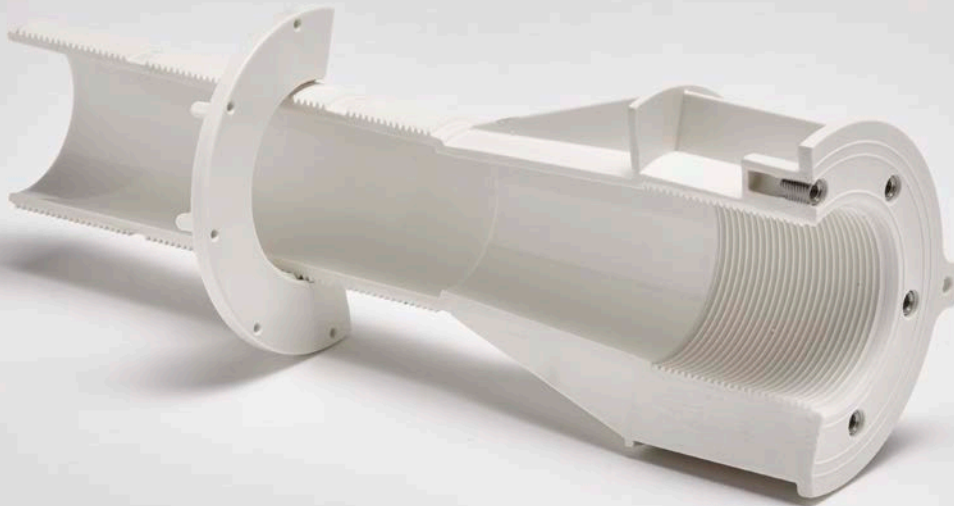
Ocean® Inlet nozzle PT, Standard, short version

for liner & stainless steel pools, with ball universal type 13/17/21 mm, Screw set, 2 Sealing, PT Screw set self-drilling, solvent connection d50/63, set



grey, black





ocean

THE DIVERSE WORLD OF THE OCEAN® WHITE GOODS

The unique modular system enables the precise configuration of design and color of your pool components exactly according to customer wishes.

We offer skimmer plates, extensions, widenings, inlets, V4A frames for floor drains, and much more in the colors black, grey and white. They are perfectly combinable with the matching pool liners, especially with our new touch liners in stone look.

All ABS products from our White Good Range are chlorine, UV, salt water and ozone resistant and comply with the strictest standards and criteria.

M5 VS. PT

THE LITTLE DIFFERENCE



The housing is equipped with high-quality stainless steel inserts A2. Thereby a frame with high quality M5 / A4 screws can be fixed.



In contrast, in PT parts you can screw in directly special developed A2 screws into the plastic housing.

Ocean® Inlet nozzle deluxe DIN, Built-up pools

for Poly-, Vinylester pools, with ball acc. DIN EN16582, flange set, sealing, POM washer, clamp nut, set



white (incl. installation tool)
grey
black



Ocean® plug

for Ocean® inlet nozzles, with O-Ring ABS, male threads 1½"



Ocean® installation tool

key for easy installation of covers of Ocean® inlet nozzles, installation without reducing water level.



Ocean® inlet nozzle cover V4A (SS316)

cover for all Ocean® Inlet nozzles, incl. cover and ball, V4A AISI316, 1½" male thread



Ball DIN:
8 drilling holes á 5 mm,
Ball universal type:
diameter drilling hole 13/18 mm



Ocean® inlet nozzle cover Square, V4A (SS316)

cover for all Ocean® Inlet nozzles, DIN, 4 drilling holes d8, AISI316, with 1½" male threads and installation tool, 11 x 11 cm



Ocean® floorinlet nozzle

for liner pools, 2" male thread, d5C solvent connection, 2 Sealing, Screw set, flow rate adjustable



Ocean® floor inlet nozzle

for concrete pools, ABS, d63 solvent connection or R2" male threads



OCEAN® MAIN DRAINS

M5 or PT

Ocean® Main drain deluxe M5

for built-up, liner, concrete & tile pools, with M5 stainless steel A4 thread inserts & screws, flat cover, 2" female thread, flange screw set, sealing set, max. flow rate 15 m³/h



white

Ocean® Main drain deluxe PT

for built-up, liner, concrete & tile pools, PT screws, flat cover, 2" female thread, flange Screw set, sealing set, max. flow rate 15 m³/h



white, black



Ocean® cover stainless steel

for Ocean® Main drain M5 and PT, V4A (SS316) stainless steel, AISI316, d 222 mm



Ocean® flange

for Ocean® Main drain M5 and PT, ABS, without grid lid



grey

Ocean® grid lid

for Ocean® Main drain M5 and PT, ABS



grey

Ocean® cover „Square“

for Ocean® Main drain M5 and PT, drilling holes d8, V4A stainless steel AISI316, 240 x 240 mm





SWIMMING IN GLEAMING SHINE

The name of V4A steel (SS316) comes from trying to produce steel grades from an alloy of iron, chrome and nickel. So „V4“ stands for trial melt 4 and „A“ for austenite. Chrome and Nickel are main components of V2A stainless steel, V4A is still higher-graded and is additionally alloyed with molybdenum.

V4A stainless steel is highly durable, versatile, elegant and rust-free and a fix component in the global pool industry. When using salt electrolysis V4A stainless can be used up to a max. salinity of 1.5 g/l.

NEW

At a maximum salt content of up to 15 g/l we recommend to use Titanium stainless steel which is available on request.

V4A WHITE GOODS

Smart Stainless steel V4A High60/High70

for concrete and liner pools, optionally with holder for niveau control



High60: 590 mm suction width
High70: 690 mm suction width

Smart Stainless Steel skimmer V4A 40/60

for concrete and liner pools, with frontal removable basket, optionally with holder for niveau control



40: 390 mm suction width
60: 590 mm suction width

Smart floor inlet nozzle V4A adjustable

for concrete and liner pools, V4A Stainless Steel, adjustable flow rate, 2" male thread



Smart wall conduit V4A with water stop

V4A Stainless Steel, with water stop and female threads



types:
l = 250mm, 1½" x 1½"
l = 350 mm, 1½" x 1½"
l = 250 mm, 2" x 2"
l = 350 mm, 2" x 2"

Smart wall conduit V4A short version

for liner pools, V4A Stainless Steel, with threads, optionally with water stop



types:
l = 100 mm, 1½" female x 1½" male
l = 250 mm, 1½" female x 1½" female
l = 100 mm, 2" female x 2" male
l = 250 mm, 2" female x 2" female

Smart inlet nozzle V4A DIN

for concrete and liner pools, V4A Stainless Steel, male threads, with DIN ball



types:
1½" - concrete pool
2" - concrete pool
1½" - liner pool
2" - liner pool

Smart wall suction V4A

for concrete and liner pools, V4A Stainless Steel, 2" male thread



Smart Main drain V4A

for concrete and liner pools, 2" female thread



Types:
200 x 200 mm - concrete pool
200 x 200 mm - liner pool
250 x 250 mm - concrete pool
250 x 250 mm - liner pool

Smart junction box V4A

for under water lighting, V4A Stainless Steel, cover 134 x 134 mm



COLOUR-UP YOUR POOL

ADAGIO SPECTRA & PRO

Adagio under water lights are innovative LED lighting solutions assembled with high quality components and materials making them very powerful, efficient and economical in use. All Adagio lights are attuned to each other for easy fittings and installations with smart technology like QickConnect™, PressFit™ or ClickOn™.



QickConnect™

Extremely reliable and easy to mount proprietary connector with gold plated contacts. The power-line wires can be inserted without the need to be stripped and are fixed with selfpiercing contact screws.

PressFit™

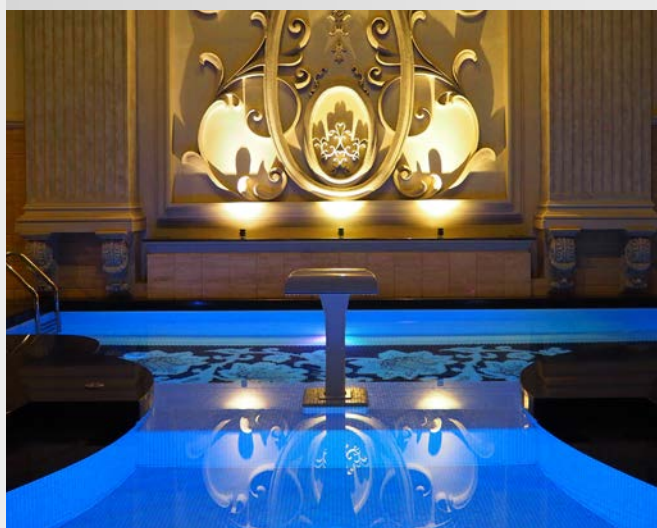
An adjustable light mounting system that allow pool lights to be fitted seamlessly to the wall, even if the wall conduits have not been mounted 100% vertically.

ClickOn™

An innovative concept of easily interchangeable face plates for pool lights. A wide selection of face plates is available allowing detailed personalization.



According to the pool size and the individual requirements the Adagio's are available in the dimensions 5, 10 or 17 cm diameter and can be specifically mounted in 1½" female threads wall conduits.



Customer pool with under water lights:
Medan, Indonesia

DIFFERENCES ADAGIO SPECTRA & PRO

FUNCTIONS	SPECTRA	PRO
Powered by 12 VAC, only 2 cables needed	o	o
Quick Connect (reliable connection system)	o	o
NoAir (no air gaps, fully potted)	o	o
3 sizes (5, 10, 17 cm Ø)	o	o
Exchangeable face plate	o	o
Wall conduits available for all wall types	o	o
Colour change by On/Off control	o	o
2 m cable included	o	
4 m cable included		o
Controlable via Adagio Pro remote control (dimming possible)		o
Connectivity RS-485 and DMX512		o
Highest luminous flux		o
Maxium light distribution due to wide radiation angle avoiding shaddow areas in the pool		o
Dimming possibility		o
Lifespan (hours)	> 25.000	> 50.000

UNDER WATER LIGHTS

LED/RGB and accessories

Adagio Pro 17/10/5 RGB

Pro 17: 3.000 lm, 75 W,
up to 50.000 h Lifespan, Ø
170 mm

Pro 10: 1.700 lm, 45 W,
up to 50.000 h Lifespan, Ø
100 mm

Pro 5: 400 lm, 10 W,
up to 50.000 h Lifespan, Ø
50 mm

11 different colours,
dimmable, incl. 4 m 2-pole cable
with junction



Adagio Spectra 17/10/5 RGB

NEW

Spectra 17: 900 lm / 1600 lm,
13,5 W / 24,5 W, Ø 170 mm

Spectra 10: 850 lm, 13,5 W,
Ø 100 mm

Spectra 5: LED RGB 250 lm,
4,5 W, Ø 50 mm



Adagio 17 + 10 + 5 cm light covers

Adagio covers are available in
colours:
V4A Stainless Steel (SS316), white,
sandwhite, light grey, light blue,
blue, black

more colours on request,
optimal colour matching with
Ocean® deluxe swimming pool
liners



Adagio Pro 17/10/5 white

Pro 17: 5.000 Kelvin, 5500 lm,
60 kW, Ø 170 mm

Pro 10: 5.000 Kelvin, 2600 lm,
30 W, Ø 100 mm

Pro 5: 5.000 Kelvin, 600 lm,
6 W, Ø 50 mm

Adagio Pro 17/10/5 warmwhite

Pro 17: 3.000 Kelvin, 4950 lm, 60
W, Ø 170 mm

Pro 10: 3.000 Kelvin, 2350 lm, 30
W, Ø 100 mm

Pro 5: 3.000 Kelvin, 540 lm, 6 W
Ø 50 mm

Adagio Spectra 17/10/5 white

Spectra 17: 1.400 lm / 2.800 lm,
15 W / 24,5 W, Ø 170 mm

Spectra 10: 1.300 lm, 13,5 W,
Ø 100 mm

Spectra 5: 350 lm, 4,5 W,
Ø 50 mm

Moonlight RGB Multicolor / White

with installation clamps for all
common light brands and all
common 300 W light frames,
niches for retrofitting, optional
with remote control, IP68, input
voltage 8 V AC-14 V AC, 4 m,
cable 2-wire, 16 colours

RGB type:
15 W, 575 lm
21 W, 925 lm
25 W, 1450 lm

White type:
16 W, 1250 lm
19 W, 1850 lm
28 W, 2100 lm

We recommend Moonlight V4A
stainless steel cover



Adagio Pro wall conduit, short

for liner and concrete pools ABS,
short design, hose connection 25
mm, thread connection inside



Adagio Pro wall conduit, long

for liner and concrete pools ABS,
long design d50, with female
threa, thread connection inside



Adagio Pro wall conduit

for polyester/vinylester pools, PP
pools, etc. ABS, with lock nut and
female thread, thread connection
inside



Adagio Pro wall conduit Stainless Steel

for Stainless Steel pools V4A
stainless steel, with female thread,
thread connection inside



Moonlight installation set

incl. cover white
(without lamp)



Transformer TORO DIN

220-230 V IN, 12 V AC OUT,
acc. DIN

150W / 350W / 700W



Transformer TORO IP64

220-230 V IN, 12 V AC OUT, IP64,
with plastic housing

150W / 350W / 700W



UNDER WATER LIGHTS

LED/RGB and accessories

Remote control for Adagio Pro, Spectra & Moonlight

without transformer

for functions OFF/ON and colour regulation for Adagio RGB MULTICOLOUR, operating distance 40-100 m, (without transformer, incl. hand transmitter, input 12 V AC)



Remote control for Adagio Pro, Spectra & Moonlight

with transformer

for function OFF/ON and colour regulation for Adagio RGB MULTICOLOUR, incl. hand transmitter, operating distance 40-100 m, also for Moonlight (with transformer 200 VA, input 230 V AC/ output 12 V AC max 200 W)



Adagio Pro remote control

with transformer

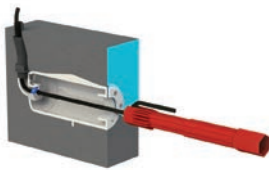
DMX512 and RS-485 connection, incl. 1 hand transmitter (with transformer 300 VA), dimming function

Hand transmitter as spare part available



Installation set

for Adagio wall conduits



Ocean® under water light M5 deluxe, 300W - 12V

ABS body, 300W-12V PAR 56 bulb (162,5 lumen), 1 m cable protection hose, 2,50 m HO7RN-F 2 x 4 cable, corrosion free, chem. resistance, IP68 protection code, sealings, screw set, change of bulb without lowering of water level, only for under water operation, illumination area: ~ 16 m² installation distance: ~ 4 m depth: 65 cm from above pool floor



Ocean® under water light M5 deluxe, 300W - 12V

incl. 18x Stainless Steel inserts & 25mm screws for liner pools, ABS 300W 12V, flange set, for polyester pools we recommend 35 mm screws



Ocean® electrical junction box

junction box made of strong, white ABS material. This junction box is compatible with all under water lights, with square lid, with O-ring and four stainless steel screws. UV-resistant and chem. resistance



Ocean® under water light M5 deluxe, 300W - 12V

With stainless steel cover, for liner pools incl. 2x Stainless Steel thread inserts A4 (SS316), ABS 300W 12V with flange set, 2,50 m cable, 1 m cable protection hose



Ocean® under water light PT

for retro fitting incl. halogen lamp 100 W-12 V or 50 W-12 V, ABS, 2,5m cable, 1 m flexible cable protection hose, glass protection, IP68, UV protectoin, illumination area/light: ~ 10 m², installation distance: ~ 2 m, depth: 65 cm from above pool floor



Transformer for 50W - 600 VA

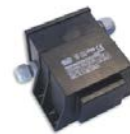
recommended for Ocean® under water light, 12 V

50W / 100W / 300W / 400W / 600W



Transformer for Smart Magic LED

Transformer 100VA for Smart Magic LED under water light 230VAC - 12VAC



Wall conduit for Smart Magic Round 13 LED, long version

Wall extension long for Smart Magic Round 13 LED underwater spotlight for liner pools, for changing the lamp without draining of the pool water, cable can stay in the cable gland



Smart Magic LED under water light

Smart Magic = high end quality level, ABS white good, V4A light incl. frame, available in LED white, RGB powerline (colour change) and RGB DXM (colour change, dimming function, etc.), each single lamp has a serial number, for liner pools, made in EU



Smart Magic Round 20 LED Under water light KS

round version, Ø est. 20cm incl. cover, ABS Einbauteil, V4A ABS white good, V4A lamp incl. POM frame, available in LED white, RGB powerline (colour change) and RGB DXM (colour change, dimming function, etc.), each single lamp has a serial number, for liner pools, made in EU



Smart Magic Round 13 LED Under water light KS

round version, Ø ca. 13cm incl. cover, ABS white good, V4A lamp incl. POM Blende, available in LED white, RGB powerline (colour change) and RGB DXM (colour change, dimming function, etc.), each single lamp has a serial number, for liner pools, made in EU



Signal transmitter for Smart Magic LED

for under water light RGB powerline, optionally with remote control



DMX Box for Smart Magic LED

for Smart Magic LED under water light RGB DMX optionally with remote control



Replacement lamp for Wibre LED

V4A Stainless Steel ,
2970 lm, white
1990 lm, RGB powerline
RGB DMX



FAMILY, SPORT, RELAXATION – THERE IS LIFE IN A POOL.



PERAQUA[®]

pooled family pleasure

A POOL FULL OF LIFE

It is our highest permission to enrich every pool with creative, perfect fitting, affordable and durable pool technology. Our focus is on the maximum ease of use, safety, cleanliness and sustainability of the selected technology for your pool projects.

Tailored to the digital age, you can choose between fully automatic pool control systems based on WIFI connection or manual control systems in **Peraqua[®] Quality**.

Our mission is to implement Peraqua[®] & Praher Top Quality in all areas of sales, marketing, service, logistics, training, repair, and after-sales services with the best dedication.

PERAQUA®

pooled family pleasure

**Peraqua Professional
Water Products GmbH**

Handelsstraße 8, 4300 St. Valentin

T. +43 7435/58488-0
info@peracqua.com



www.peracqua.com

PERAPLAS DEUTSCHLAND GMBH

Regensburger Ring 12, 91154 Roth
T. +49 9171 9677-1200, F. +49 9171 9677-2209
office.de@peraplas.com

PERAPLAS ČESKO s.r.o.

25101 Říčany-Jazlovce, Zdebradská 62
T. +420 323 63 76-73, F. +420 323 63 76-72
office.cz@peraplas.com

Member of **PRAHER
GROUP**

©Peraqua GmbH, 2020-1

This document does not contain warranty assurances, but merely wants to convey first information. The program is constantly being expanded, therefore the versions and types correspond to the state of printing. Minor deviations of the technical specifications are system specific possible and subject to technical changes, printing and typesetting errors.